

SCRIA ANNUAL REPORT 2018 - 2019



विषय सूची Contents

निदेशक की रिपोर्ट	Director's Report	3
SCRIA के बारे में	About SCRIA	3
हमारी पहलें		4
Our Initiatives		6
प्रभाव	Impact	8
स्वयंसेवी	Volunteers	9
स्थानीय पहल	Local Initiatives	10
परिवर्तन दूत	Change Makers	11
Publications		12
Supportive services		12
वित्तीय जानकारी	Financial report	13
संस्थान	The Organization	15

रिपोर्ट का प्रकाशन **Published by** SCRIA, Khori 123101, District Rewari, Haryana
सितम्बर 2019 September 2019

ज़िम्मेदारी **Responsible** सुन्दर लाल – कार्यकारी निदेशक Sunder Lal - Executive Director

रिपोर्ट लेखन व प्रारूप **Report written & designed by** सेनू Senoo



निदेशक की रिपोर्ट

- अपने कार्यक्रमों के प्रभाव को बढ़ाने के लिये पिछले दो वर्षों में कुछ रणनीतियों को परखने के बाद 2018-19 में हमने निम्न को अपनी नियमित कार्यविधि में अपनाया है
- सामाजिक चुनौतियों पर स्कूल जाने वाले किशोरों व युवाओं के साथ सक्रिय सम्पर्क
 - बदलाव के बाधकों के साथ ऐच्छिक बदलाव के लिये सक्रिय संवाद
 - पुरुषों के साथ लक्षित समूह में कार्य व स्वयंसेवी के रूप में व्यापक गठजोड़
 - कार्यक्रमों से सम्बंधित प्रमुख जानकारियों के लिये डिजिटल सूचना प्रबन्धन तंत्र

जन नीतियों व कार्यक्रमों के प्रभावशाली क्रियान्वयन के लिए महिलाओं व पुरुषों के संयुक्त प्रयासों को हम इस वर्ष भी सुदृढ़ करते रहे। हमारी टीम निरंतर प्रयासरत है लड़कों व पुरुषों को लिंग समानता व हिंसा पर संवेदनशील करने के लिये, स्थानीय शासन व विकास की संस्थाओं को सुदृढ़ करने में और प्राकृतिक संसाधनों के सतत उपयोग को बढ़ावा देने के लिये। SCRIA की 40वीं वार्षिक प्रतिवेदन सबके साथ सांझा करते हुए मैं उन सबके प्रति आभार प्रकट करता हूँ जिन्होंने हमारे लक्ष्य व प्रयासों में योगदान दिया है – स्वयंसेवी, सहयोगी, स्टाफ टीम व बोर्ड के सदस्य।

सुन्दर लाल, कार्यकारी निदेशक

Director's Report

- After working for couple of years on few key strategies for improving the impact of our programs in 2018 - 19 we adopted the following four as part of our regular process -
- Engagement with school going teens & youth on social challenges related to gender, climate, governance, etc.
 - Actively associating with withholders of change to effect desired change
 - Enlarging the compasses of volunteers and focus group by bringing men in to it
 - Digital Management Information System [MIS] for key program related details

During the year, we continued strengthening collective efforts of women and men in outreach area for effective implementation of public policies and programs in rural areas. The team also continued with sensitizing & mobilizing boys & men for ending violence against women & girls, promoting gender equality, activating & strengthening institutions of local governance & development and advocating sustainable use of natural resources. While sharing the 40th annual report of SCRIA with all, I thank all individuals and institutions – our volunteers, partners, team members and board members who contributed towards SCRIA's endeavour.

Sunder Lal, Executive Director

SCRIA के बारे में About SCRIA

हमारी दृष्टि Our Vision

ग्रामीण समुदाय द्वारा सतत ग्रामीण विकास
Sustainable rural development by rural communities

हमारा लक्ष्य Our Mission

विकास व शासन की प्रक्रियाओं में समुदाय की
अर्थपूर्ण भागीदारी के लिये उनकी क्षमताओं का
विकास करना

Building capacities of communities for
meaningful participation in governance &
development processes

पहुंच का क्षेत्र Outreach Area

1170 गांव जो दक्षिण हरियाणा के रेवाड़ी,
महेन्द्रगढ़, झज्जर, दादरी व भिवानी जिलों और
उत्तर राजस्थान के चुरु जिलों में हैं
1170 villages in the districts of Rewari,
Mahendergarh, Jhajjar, Dadri & Bhiwani in
south Haryana and Churu in north Rajasthan

पहुंच के जन Outreach People

सामाजिक व आर्थिक रूप से पिछड़े समुदाय, ग्राम
सभा सदस्य, पंचायती राज संस्थाओं के प्रतिनिधि –
खासतौर पर महिलाएं व नागरिक
Economically & socially disadvantaged
communities, members of Gram Sabha,
representatives of Panchayati Raj Institutions -
specially women, like minded civil society
organizations and citizens'

केन्द्र बिन्दु है समुदाय के साथ कार्य करने पर
जिससे वह प्रगति में सहयोगी हों। महिलाएं, पुरुष,
किशोर व युवा पहलों में भागीदार होते हैं जिससे
प्रभाव लम्बे समय रहता है, लागत में हिस्सेदारी
होती है, स्थानीय पहलें होती हैं और ग्राम स्तर पर
प्रबन्धन क्षमताओं में बढ़ोतरी होती है

Focus is on working with communities for a
meaningful relationship as partners in
progress. Women, men, teens & youth are
involved in programs that leads to community
ownership, cost sharing, self-reliance, grass
root initiative and enhanced village level
organizational capacities.

हमारी पहलें

पहुंच के कार्यक्षेत्र के नागरिकों की जिन्दगी में गुणात्मक व संख्यात्मक सुधार के लिये SCRIA नागरिकों को एक मूक ग्रहणकर्ता की जगह शासन व विकास की प्रक्रियाओं में पहल कर प्रबन्धक बनाने के लिये प्रयासरत है। इसके लिये SCRIA महिला, पुरुषों, किशोर व युवाओं की क्षमताओं का विकास करती है जिससे वह अपनी समस्याओं को पहचानें व सुस्पष्ट करें, उसके निपटान का हल खोजें और स्थानीय पहलों के लिये संसाधन जुटाएँ। कार्यक्रमों के लागत में समुदाय की हिस्सेदारी,

स्वावलम्बिनी

दृष्टि

लिंग समानता को मुख्यधारा में लाना

लक्ष्य

- सामाजिक, राजनैतिक, आर्थिक व विकास की प्रक्रियाओं में अपने अधिकार, हक व न्याय लेने के लिये महिलाओं को सशक्तिकरण के अवसर देना
- लिंग समानता के लिये समर्थक वातावरण बनाना
- महिलाओं के मुद्दों व विचारों को समाज की मुख्यधारा में प्रोत्साहित करना

विकास के लिये पहलें

सक्रिय स्वावलम्बन महिला संगठनों व संघों की सदस्याओं और अन्य महिलाओं को महिलाओं के अधिकार, हक व लिंग न्याय के लिये संवेदनशील करना

सक्रिय समानता ग्राम सभा में लिंग समानता व लिंग परिपेक्ष से सम्बंधित मुद्दों को प्रोत्साहन

शक्ति परिषद लिंग व घरेलू हिंसा, आदि से त्रस्त महिलाओं के लिये एक सहायता समूह

सक्रिय लिंग अंकेक्षण महिलाओं की स्थिति जानने के लिये दृष्टिकोण व व्यवहार का मानचित्रण

2018-19 में पहुंच व गतिविधियां

• सामान्य पहुंच के गांव	1,170
• सघन पहुंच के गांव	560
• सक्रिय शक्ति महिला नेत्रियां	883
• क्षमता वर्द्धन गतिविधियां	
• कार्यशाला/प्रशिक्षण	21
• नागरिक संवाद	129
• अभियान	7
• लिंग समानता सर्वे गांव	192
• महिला मेला	1
• शक्ति परिषद सदस्याएँ	116
• शक्ति परिषद बैठकें	12
• शक्ति परिषद की पहलें	91
• शक्ति कोष राशी	₹132,608

स्वशासन

दृष्टि

सम्मिलित व जवाबदेही शासन

लक्ष्य

शासन की निर्णय लेने वाली प्रक्रियाओं में महिलाओं व अन्य नागरिकों की अर्थपूर्ण भागीदारी

विकास के लिये पहलें

सक्रिय संघ स्थानीय पहल के लिये महिलाएँ संगठनों व संघ में संयोजित

सक्रिय मंच गांवों में विभिन्न महिला संगठनों का गांव स्तरीय मंच

सक्रिय प्रतिनिधि व पंचायत पंचायती राज व्यवस्था में निर्वाचित महिला प्रतिनिधि व अन्य सदस्य शासन व विकास की प्रक्रियाओं को सम्मिलित व जवाबदेही बनाने के लिये प्रयासरत

सचेत नागरिक सामरिक महत्व के मुद्दों में नागरिकों की समझ बनाना

सक्रिय सामाजिक अंकेक्षण व जन सुनवाई ग्राम सभा द्वारा गांव में विकासात्मक पहलों, सार्वजनिक सुविधाओं और सेवाओं का आंकलन व अवलोकन

2018-19 में पहुंच व गतिविधियां

• सामान्य पहुंच के गांव	990
• सघन पहुंच के गांव	500
• महिला संगठन गांव में	232
• क्षमता वर्द्धन गतिविधियां	
• कार्यशाला/प्रशिक्षण	128
• नागरिक संवाद	74
• अभियान	6
• अध्ययन भ्रमण	1
• सूचना कैम्प	129
• सक्रिय मंच	500
• सक्रिय मंच सदस्याएँ	17,813
• सक्रिय पंचायत	61
• ग्राम स्तरीय कमेटियां सक्रिय की	1750
• संगठन व मंच द्वारा स्थानीय पहल	2353

सामाजिक अंकेक्षण व सहभागी प्रभाव आंकलन के द्वारा संस्था अपने कार्यकलापों में अधिक पारदर्शिता, निरंतरता व समुदायिक वचनबद्धता सुनिश्चित करती है। इसके अतिरिक्त समुदाय से स्वेच्छक स्वयंसेवी निरंतर कार्यक्रमों में महत्वपूर्ण भूमिका निभाते हैं। राष्ट्रीय प्रयासों व क्षेत्र की समस्याओं के मद्देनजर SCRIA की मुख्य पहलें लिंग समानता, स्वशासन, आजीविका व प्राकृतिक सम्पदा के प्रबन्धन से सम्बन्धित हैं।

स्वजीविका

दृष्टि

आर्थिक सशक्तिकरण व सम्मिलन

लक्ष्य

महिलाओं व अन्यो को उद्यम व उद्यमिता के अवसर प्रदान करना

विकास के लिये पहलें

सक्रिय संचय सक्रिय संगठन के सदस्यों के लिये बचत व ऋण प्रक्रिया

सक्रिय उधमी महिलाओं के लिये सूक्ष्म उधम की पहल का अवसर

सक्रिय उधम सक्रिय संगठनों द्वारा सामूहिक व्यवसाय को प्रोत्साहन

सक्रिय शिक्षा ग्रामीण युवतियों व युवकों को उच्च शिक्षा व तकनीकी प्रशिक्षण प्राप्त करने के लिये सहयोग और आमजन को आर्थिक व वित्तीय मुद्दों पर संवेदनशील करना

2018-19 में पहुंच व गतिविधियां

• पहुंच के गांव	232
• महिला संगठन	232
• सदस्याएँ	2,768
• संगठनों के पास बचत	₹24,677,350



सम्पदा प्राकृतिक

दृष्टि

प्राकृतिक संसाधनों का प्रभावी व सतत प्रबंधन

लक्ष्य

जल, मिट्टी, वनस्पति, चारा व ईंधन के प्रभावी प्रबंधन के लिये ग्राम समुदाय का सशक्तिकरण

विकास के लिये पहलें

सक्रिय जल सम्पदा बरसाती जल संग्रहण तंत्र, भूजल पुनर्भरण, उचित प्रबंधन व उपयोग

सक्रिय स्वच्छता घरों व समुदाय स्तर पर बेहतर स्वच्छता के लिये ग्राम समुदाय को संवेदनशील बनाना और उन्हें शौचालय, सोखता गड्ढा व कम्पोस्ट निर्माण के लिये तकनीकी व आर्थिक सहायता प्रदान करना

सक्रिय कृषक किसानों व पशुपालकों के लिये शुष्क खेती के तरीके व पशुपालन प्रबंधन के गुर समझने व अपनाने का अवसर

सक्रिय सामलात सम्पदा सामलात भूमि व संसाधनों का सम्बंधित समुदाय द्वारा सतत प्रयोग द्वारा सतत प्रबंधन

2018-19 में पहुंच व गतिविधियां

• सामान्य पहुंच के गांव	500
• सघन पहुंच के गांव	490
• क्षमता वर्द्धन गतिविधियां	
• कार्यशाला / प्रशिक्षण	4
• नागरिक संवाद	49
• तलई	11
• बरसाती जल संग्रह टांका	167
• कणाबन्दी हैक्टेयर	300
• उन्नत खेती हैक्टेयर	250
• प्राकृतिक खेती परिवार	285
• जैविक कम्पोस्ट	170
• गन्दे पानी का प्रबंधन - गांव	70

Our Initiatives

For bringing qualitative & quantitative improvement in the lives of citizens' in its outreach region SCRIA works towards transforming them from being passive recipients to initiators and managers of governance & development processes. For this purpose SCRIA facilitates capacity building of women, men, youth & teenagers to identify & articulate their own problems, find ways to tackle them, generate - mobilize resources for initiating & implementing local initiatives.

Swavlambini Self reliant

Vision

Mainstreaming gender equality

Mission

- Empowerment opportunities to women to seek their rights, entitlement & justice in social, political, economic and developmental processes
- Facilitate an enabling environment for gender equality
- Promote mainstreaming of women's issues

Development initiatives

Sakriya Swavlamban

Sensitizing women on women's rights, entitlements & gender justice

Sakriya Samaanta

Promotion of issues of gender equality & gender perspective among Gram Sabha members'

Shakti Parishad

Support group for victims of gender & domestic violence, social intolerance, etc.

Sakriya Gender Audit

Mapping gender attitudes & practices to ascertain the status of women in family & society

Outreach & events facilitated in 2018 - 19

• General outreach villages	1170
• Intensive outreach villages	560
• Sakriya Shakti [women leaders]	883
• Capacity building activities	
- workshops/ trainings	21
- citizens' dialogues	129
- campaigns	7
• Gender Audit – villages	192
• Shakti Parishad members	116
• Shakti Parishad meetings	12
• Initiatives by Shakti Parishad	91
• Shakti Kosh amount	₹132,608

Svashaasan Self governance

Vision

Inclusive and accountable governance

Mission

Meaningful participation of women & other citizens' in decision making processes of governance

Development initiatives

Sakriya Sangh

Women organizing themselves into groups & federation for local initiatives

Sakriya Manch

An intra village network of various women groups

Sakriya Pratinidhi

Elected women & other representatives of Panchayati Raj Institutions making governance & development inclusive & accountable

Sachet Naagrik

- Sensitizing citizens' on issues of critical importance
- Gram Sabha members monitoring & reviewing the status of development initiatives, public facilities & services in their villages

Outreach & events facilitated in 2018 - 19

• General outreach villages	990
• Intensive outreach villages	500
• Sangathans' in villages	232
• Capacity building activities	
- workshops/ trainings	128
- citizens' dialogues	74
- campaigns	6
- study tours	1
• Information Camps	129
• Sakriya Manch	500
• Sakriya Manch Members	17,813
• Sakriya Panchayats	61
• Village level Committees activated	1750
• Local Initiatives by groups/ Manch	2353

Sustainability, community's ownership, accountability and probity in initiatives' is further fortified by cost sharing, annual social audit of SCRIA's programs, participatory impact monitoring & involvement of voluntary community volunteers. In concurrence with the national policies and problems of the region SCRIA has organized its' work around key initiatives of gender equality, governance, livelihood & natural resources management known as Swavlambini, Svashaasan, Svajeevika & Sampada Prakritik respectively.

Svajeevika Self livelihood

Vision

Economic empowerment and inclusion of women & others

Mission

Provide opportunity to women & others for micro enterprise & entrepreneurship

Development initiatives

Sakriya Sunchay

A saving & credit activity for members of Sakriya Sangathans

Sakriya Udyami

An opportunity for women entrepreneurs to start micro enterprise

Sakriya Shiksha

A financial opportunity for young women & men interested in attaining technical or higher education and sensitization of people on financial & economic issues

Outreach & events facilitated in 2018 - 19

• Outreach villages	232
• Sangathans	232
• Members	2,768
• Savings w/ groups	₹ 24,677,350



Sampada Prakritik Natural Resources

Vision

Effective and sustainable natural resource management

Mission

Empowerment of village communities for efficient management of water, soil, vegetation, fodder & fuel

Development initiatives

Sakriya Jal Sampada

Promote rain harvesting systems, ground water recharging & prudent management

Sakriya Svachta

For improved sanitation at household & community level

Sakriya Krishak

An opportunity for farmers and livestock holders to learn & adopt improved dry land agricultural practices & livestock management

Sakriya Samlaat Sampada

Sustainable management & use of common lands and natural resources' assets

Outreach & events facilitated in 2018 - 19

• General outreach villages	500
- Intensive outreach villages	490
• Capacity building activities	
- workshops/ trainings	4
- dialogs	49
• Talai ponds	11
• Tankas Rain water harvesting tanks	167
• Kanabundi Slope bunding [hac.]	300
• Improved cultivation, bunding [hac.]	250
• Natural farming [families]	285
• Organic composting	170
• Waste water management [villages]	70

वांछित परिवर्तन को जानने के लिये व विकासात्मक प्रक्रियाओं से उत्पन्न प्रभावों व बदलावों पर समीक्षात्मक रूप से मंथन करने के लिये SCRIA ने अपने कार्यक्रमों के लिये सहभागी प्रभाव आकंलन को नियमित वार्षिक घटक बनाया है। इसके लिये प्रभाव, सूचक, जानकारी एकत्र करने की पद्धति व विश्लेषण प्रक्रिया स्थापित की है।

प्रभाव आकंलन संस्था द्वारा संगठित महिला संगठनों/ मंचों के साथ मिलकर किया जाता है। पहुंच के समुदायों में SCRIA द्वारा संचालित पहलों के प्रभाव को कुछ सूचकों के साथ नीचे दर्शाया है।

To monitor the ultimate desired change and for critical reflection on the effects and changes caused by development interventions SCRIA has made participatory impact monitoring a regular annual feature for its programs. For this purpose impacts, indicators, tools for data collection and analysis have been established.

Impact monitoring is done with the active involvement of women groups/ Manch facilitated by the organization. Given below are some impacts along with indicators indicating the extent to which initiatives facilitated by SCRIA have had an impact on outreach communities.

1 Impact Increased awareness among people regarding gender inequality due to visible & hidden discrimination

Indicators	2014	2018
% of group members adopting 10 prescribed steps to promote gender equality	58	80
% of men in Sangathan families adopting at least 5 steps to promote gender equality	40.5	55
no. of local initiatives undertaken per village by groups for reducing gender discrimination	2	4.5
no. of resolutions put forward per village in Gram Sabha for promoting gender equality	2.18	1.68
no. of steps undertaken per village by Panchayat for promoting gender equality in village	2.37	2

2 Impact Increased efforts for checking visible and hidden violence against women

Indicators [average for per village]	2014	2018
no. of issues related to violence against women raised in Gram Sabhas	2	2.76
no. of women seeking redress from groups on female feticide & sexual violence per village	2.4	1.9
no. of women victims provided assistance by Sangathan/ Parishad per village	2	3
no. of women victims provided support by community & Panchayat per village	1	2.19
% of men from Sangathan families supporting actions against gender violence	24	35.52

3 Impact Increased participation of women in governance for inclusive governance

Indicators	2008	2018
% of women attending Gram Sabha	37.5	46.25
No. of proposals forwarded by women and taken up for action by Gram Panchayat	7/ 4.5	7/ 4
% of elected women representatives active in Panchayats'	22	64.19

4 Impact Increase in social political initiatives at village level

Indicators	2008	2018
% of members actively involved in social political initiatives	55.5	66
involvement of other women from village in various development initiatives	22.5	25
no. of social political initiatives undertaken by women groups in a village	3	4.60

5 Impact Increased awareness among people on sustainable management of natural resources

Indicators	2010	2018
% of sangathan members involved in initiatives for the revival & adoption of traditional, ecologically sound practices for the management of natural resources	61.75	70
Families in a village adopting practices for sustainable management of natural resources	431	310
% of members adopting rain harvesting, composting, soak pits, natural farming, etc.	65	85
NR facilities & management practices managed by Manch members in a village	13	15

स्वयंसेवी Volunteers

SCRIA की विभिन्न पहलों में सफलता का राज है स्वयंसेवी – पहुंच के क्षेत्र से वो किशोर, युवा, महिलाएँ व पुरुष जो स्वेच्छा से अभियान, चेतनाशील कार्यक्रम, सामूहिक सिफारिश, हिंसा पीड़ित महिला को सहयोग, सामूहिक संपत्ति विकास व सामुदायिक पहलों जैसे शासन व विकास की प्रक्रियाओं को सम्मिलित व जवाबदेही और जन सेवाओं व कार्यक्रमों को प्रभावी बनाने में सांझेदार होते हैं।

- नियमित योगदान देने वाले 6243 स्वयंसेवी हैं
- रिपोर्ट वाले कार्य वर्ष में 382 स्वयंसेवियों ने 1443 कार्य दिवस का योगदान दिया
- जिसमें 275 महिलाओं का योगदान 1090 कार्य दिवस था और 109 पुरुषों का 353 कार्य दिवस
- इस योगदान को जब न्यूनतम मज़दूरी से जोड़ते हैं तो इस का मूल्य ₹361,600 है! संस्था ने 2018 - 19 में समुदाय से संसाधन जुटाए ₹361,600 के सिर्फ स्वयंसेवियों की विभिन्न गतिविधियों में संचालन की भूमिका से!
- इस वर्ष स्वयंसेवियों के लिये 29 प्रशिक्षण आयोजित किये

स्वयंसेवियों की विशिष्टता

- ★ 19% स्वयंसेवी संस्था द्वारा गठित महिला संगठनों की सदस्याएँ या उनके परिवार के सदस्य हैं
- ★ 81% स्वयंसेवी संस्था द्वारा गठित सक्रिय मंच की सदस्याएँ या उनके परिवार के सदस्य हैं
- ★ 87.35% स्वयंसेवी 18 से 45 वर्ष के हैं व 12.65% 46 से 60 वर्ष के हैं
- ★ 79% स्वयंसेवी व्यावहारिक रूप से शिक्षित हैं व 21% औपचारिक रूप से शिक्षित हैं
- ★ 9% स्वयंसेवियों का स्वरोजगार है, 56% किसान हैं, 18% विद्यार्थी हैं व 17% बेरोजगार

A significant share of success in SCRIA's various initiatives is due to its outreach constituents, children - youth - women - men, who willingly partner as volunteers with SCRIA in community initiatives like campaigns, community sensitization & motivation, collective advocacy, support to women victims of violence, community asset development and in local initiatives for inclusiveness & accountability in governance & developmental processes and for making public services functional.

- 6243 community volunteers, both women & men, are regularly active in SCRIA facilitated community initiatives.
- In the reporting year 382 volunteers contributed 1443 workdays in various initiatives
- Of this 275 women contributed 1090 workdays and 107 men contributed 353 workdays
- This year workdays' contribution of 1443 days amounts to ₹361,600 when calculated as per the statutory minimum wage. In 2018 -19, SCRIA mobilized resources from outreach community worth ₹361,600 just through volunteers working on various community based initiatives!

Volunteers' profile

- ★ 19% volunteers are members of SCRIA facilitated Sangathans' or their family members
- ★ 81% volunteers are members of SCRIA facilitated Sakriya Manch' or their family members
- ★ 87.35% of the volunteers are in the age group of 18 to 45 yrs., 12.64% in 46 to 60 yrs.
- ★ 79% of the volunteers are functionally literate while 21% are formally literate
- ★ 9% of the volunteers are self-employed, 56% farmers, 18% are students & 17% unemployed

SCRIA संस्था आभार के साथ 6,243 स्वयंसेवियों का सहयोग स्वीकार करती है जिनके निस्वार्थ योगदान के बिना लक्ष्य तक पहुंचना संभव नहीं है

SCRIA gratefully acknowledges the support of 6,243 community volunteers without whose selfless devotion the mission would be incomplete

स्थानीय पहल Local Initiatives

कई वर्षों से SCRIA के कार्यक्षेत्र के गांवों में स्थानीय स्तर पर प्रजातान्त्रिक व विकासात्मक प्रक्रियाओं में जवाबदेही व सम्मिलन लाने के लिये नागरिकों द्वारा कार्यवाही आम है अपवाद नहीं। इस प्रकार की कार्यवाही को प्रोत्साहित किया जाता है जीवन को प्रभावित करने वाली सामाजिक, राजनैतिक, आर्थिक और कानूनी प्रक्रियाओं में महिलाओं की भूमिका को मुख्यधारा में लाने के लिये व नागरिकों की सक्रिय भागीदारी को प्रोत्साहित करने के लिये। यह स्थानीय पहल होते हैं चर्चा, सामुदायिक बैठकों, निर्णायकों को शिकायत, बातचीत, जन प्रदर्शन, रैली, प्रशासन को ज्ञापन, श्रमदान, प्रेस कान्फ्रेंस इत्यादि द्वारा। स्थानीय पहल होते हैं

- जन स्कीमों व कार्यक्रमों के प्रतिपादन और सेवाओं को प्रदान करने में सुधार के लिये
- जन कार्य, विकासात्मक व शासन की प्रक्रियाओं में जवाबदेही के लिये
- गांव स्तरीय विकासात्मक पहलों व जन सेवाओं में लिंग संवेदनशीलता और लिंग आधारित भेदभाव व हिंसा का आंकलन व समीक्षा करने के लिये

इन पहलों में SCRIA की भूमिका सीमित होती है उचित जानकारी प्रदान करने में, सम्बन्धित संस्थाओं के साथ सम्पर्क कराने में और कानून की अनुपालना को प्रोत्साहित करने में। इस रिपोर्ट के वर्ष में पहुंच के 465 गांव में स्थानीय पहलों की गईं जिनका विवरण नीचे दिया है।

For many years now citizens' action for accountability & inclusiveness in democratic & developmental processes at local level in SCRIA's outreach villages are the norm rather than exception. This is encouraged for mainstreaming the role of women and for encouraging citizens' to actively participate in social, political, economic & legal processes affecting their lives. Local initiatives are in the form of discussions, community meetings, complaints to "decision makers", negotiations, public demonstrations, rallies for support from general public, memorandum to administration, voluntary labour, press conference and protest march. They are for

- improvement in delivery of public schemes, programs & services
- increased accountability in public works, development & governance processes
- negotiation for & monitoring of gender sensitivity in village level development initiatives and public services along with gender based discrimination & violence

SCRIA's role in all this is limited to providing appropriate information, networking with appropriate bodies and in promoting respect for law in word and spirit. In the reporting year initiatives were undertaken in 465 outreach villages the details of which are given below -

• कुल स्थानीय पहल Total local initiatives	2353
• पहलें जिनका समाधान हुआ No. of initiatives resolved	1974
• पहलें जो चालू हैं No. of initiatives ongoing	371
• पहलों के प्रकार Type of initiatives	22
• पहलों में भागीदार महिलाएँ No. of women involved in initiatives	24897
• पहलों में भागीदार पुरुष No. of men involved in initiatives	8785
• पहलों में भागीदार मंच सदस्य No. of Manch members involved	22652
• पहलों में कुल कार्य दिवस लगे No. of workdays spent	21503



परिवर्तन दूत Change makers

किसी भी स्थिति में किसी भी जगह पर कोई भी व्यक्ति परिवर्तन निर्माता, परिवर्तक हो सकता है। परिवर्तन दूत होने के लिये चाहिये केवल दृष्टि, पहल, संयम, दृढ़ता, साहस व विश्वास। रूढ़ीवादी समाज में परिवर्तन केवल कठिन ही नहीं अपितु जोखिम वाला कार्य भी होता है। हमारे कार्यक्षेत्र के लोग मुख्यतः महिलाएँ इन कठनाईयों से विचलित हुए बिना परिवर्तन ला रही हैं अनेक प्रकार की पहलों के द्वारा जैसे व्याप्त लिंग भेदभाव व हिंसा के विरुद्ध कार्यवाही करना, हिंसा पीड़िता को सहायता देना, सामाजिक राजनैतिक व विकासात्मक प्रक्रियाओं में सम्मिलन सुनिश्चित करना, लोक सेवाओं स्कीमों में जवाबदेही व प्रतिक्रियाशीलता मांगना, ज़रूरतमंद को जायज़ हक व अधिकार दिलवाना, गांव स्तरीय विकास व निगरानी समितियों को सक्रिय कर क्रियाशील करना, जन संस्थानों की अर्थपूर्ण कार्यशीलता सुनिश्चित करना ओर सार्वजनिक संसाधनों का जन प्रबन्धन प्रोत्साहित करना।

Any person can be a change maker, a transformer in any situation in any place. It only requires vision, initiative, patience, persistence, courage and faith to be a transforming agent. Change in a rigid society is not only difficult but at times a dangerous exercise. But undeterred, people, mainly women, in our outreach villages go about creating ripples of change by acting against pervasive gender discrimination & violence, providing support to women victims of violence, securing inclusiveness in social political & development processes, seeking accountability & responsiveness in public services & schemes, facilitating due benefits for needy, activating public forums like development & supervision committees, ensuring inclusiveness in local governance & development processes, working for meaningful functioning of public institutions and for public management of community assets & common resources.

Indra Devi of village Hardesar, Rathangarh, district Churu in Rajasthan is from a socially & economically disadvantaged family. She studied upto middle school, got married very young, her husband is a wage labourer and they have three school going children. Encouraged by members of SCRIA facilitated women group in her neighbourhood she joined the group and started home based enterprises of tailoring & livestock management. Impressed by her financial accomplishment her family eased up restriction on her going out and she started attending capacity building events on social, political & development issues. Soon she started taking small initiatives in her neighbourhood helping deserving get due benefits from various public schemes like pension for widows, getting deserving families included in food security list, etc. Along with group members' she got Gram Sabha and various development committees activated. Indra spearheaded an initiative to responsibly manage wastewater in the village, after facing much hurdles and recalcitrant attitudes her fellow village residents adopted soak-pits and now the village has nearly overcome sanitation issues. Indra has also been instrumental in improving attitudes of teachers, level of education and quality of mid day meals in the local school. She has also activated School Management Committee, is a member of it and ensures that the SMC meets regularly. All this has buoyed her confidence and made her realise the transformative power of initiatives by ordinary people that bring about meaningful change. Indra is a busy change maker who has also taken initiatives in the village to improve drinking water supply, in ensuring transparency in MNREGA work & payment, in getting illegal liquor vend closed and in checking violence against women.



Indra is not the only change maker in our midst. There are several thousand women & men who are bringing about change in their & others' lives through various initiatives. Sometimes the initiatives are very small benefitting a family or two and other times the effect of the initiative goes beyond few villages. Shakuntla Devi of village Mohanpur, Bawal in district Rewari of Haryana mobilized Panchayat of 84 villages of Bawal to pressurize police & administration into finding a missing teenaged girl from a disadvantaged family who disappeared under suspicious circumstances.

Saroj Devi of village Rupeli, Bidasar Churu has ensured in her village fair & timely distribution of ration under PDS, timely & correct payment under MNREGA, regular & punctual presence of teachers in school, justice to victim of domestic violence and accountability in public works. Poonam of village Lala, Jatusana in district Rewari is Sarpanch of her village but till couple of years back her husband had taken over the mantle of Sarpanch and she was confined to home. Sakriya Manch members of her village publicly supported her active role in Panchayat. Since then Poonam has cracked down on ration pilferage in the Anganwadi, improved the overall working of Anganwadi, has motivated women



Panch to carry out their responsibilities, activated village committees and regularly holds Gram Sabhas'. Chagni Devi of village Rampur, Sujangarh Churu took up cudgels against school management when she found that children were getting unpotable water for drinking while the teachers had filtered water. Since then children are also getting filtered water for drinking & mid day meal has improved. Renu, Sunita & Seema of Rajawaas village in Rewari got waste water diverted from their village pond to an alternate pit outside the village, are working for rejuvenating

the village pond, got the surrounding area of Anganwadi free of garbage and wastewater and are now working with Panchayat on keeping public spaces in village clean. Vikram of village Loonch in Churu actively promotes natural farming and relentlessly pursues cases where ration is not being distributed fairly by PDS outlets. Suman of village Lakhnor in Rewari is a team member of SCRIA and a regular change maker like other team members, but in the reporting year she did the unthinkable, she managed to convince Khap Panchayat [a men's only bastion of rigid Patriarchy] to take initiatives for ending discrimination violence against women & girls and to include women in their decision making and various programs.

Publications

During the year following were published for sensitization, opinion building & for mass dissemination of information –

- Booklets in Hindi 2 - on public schemes for the women & children in Rajasthan & Haryana
- Handbills in Hindi 5 – sensitizing teens & youth on leadership & climate change, prevention & redressal of sexual harassment at workplace, sensitizing men & youth for ending violence against women and on voter's awareness during state assembly elections
- Banners in Hindi 15 on above issues
- Newsletter in Hindi - Svashaasan [governance] published quarterly
- SCRIA's annual report for 2017 - 2018
- Audio Messages in Haryanvi & Marwari on issues related to ending gender based violence & discrimination, public schemes & voters' awareness

Supportive Services

At SCRIA the two main supportive services, accounts & administration, constantly endeavour to provide proficient service ensuring transparency and accountability in their work. Finance management takes into account the accepted national - international standards of accounts & finance management, the upkeep of inventory, stock & assets. It rigorously follows digital payments and cash payments are nearly negligible now. Furthermore, in the reporting year SCRIA continued in its pursuit of making its campuses green. SCRIA, for its use now generates 11.2 kwp of solar power daily, harvests 4,04,500 litres of rainwater annually, recharges 23,25,300 litres of groundwater annually, composts 40,500 kilogram of bio waste, nurtures 1,512 trees & plants of 72 different varieties, runs an ecological farm in 1.5 acres and manages livestock for chemical free milk & milk products. To fulfil its obligation towards public accountability, SCRIA made available online its annual report along with financial statements & has nominated its Head Administration as Public Information Associate for queries under Right to Information Act. SCRIA also has an internal complaints' committee ICC, against sexual harassment at workplace as per the Act and its headed by team leader Ms. Sheela.

Balance Sheet as on 31st March, 2019

LIABILITIES	Schedule	AMOUNT	ASSETS	Schedule	AMOUNT
CAPITAL FUND		9,296,201.99	FIXED ASSETS	A	9,296,201.99
Purpose Specific Revolving Funds	C	34,433,564.00	Opening Balance as on 01.04.2018		9,343,626.99
Staff Social Security Fund		371,971.80	Add : Addition during the year		218,000.00
Payables		838,567.00	Less : Disposal /damage during the year		265,425.00
Income & Expenditure A/c			Investment – Bank FDRs		33,968,000.00
Opening Balance as on 01.04.2018	[314,489.28]		Loans & Advances	D	55,000.00
Add : Excess of income over expenditure during the year	<u>367,752.75</u>	53,263.47	Security - Telephone & LPG		7,053.00
			Receivables		262,419.00
			T.D.S. Refundable A.Y 2018-19		222,368.00
			T.D.S. Refundable A.Y 2019-20		227,008.00
			Grant Fund Receivable	B	458,161.75
			Cash & Bank Balance		497,356.52
			Cash in Hand		5,494.00
			Cash at Bank		<u>491,862.52</u>
TOTAL		44,993,568.26			44,993,568.26

Sunil

Accounts Executive
Place: Khori
Date :20.09.2019

Head – Administration



Signed as per our separate audit report of even date attached herewith
M/S PANKAJ MAN SINGH & CO.
Chartered Accountants

Pankaj Sharma, FCA, DISA (ICAI)
Partner, Membership No. 096728

Executive Director



Income & Expenditure Account for the year ended on March 31st, 2019

Expenditure	Schedule	Amount	Income	Schedule	Amount
Expenditure met from Purpose Specific Grant Fund	B	4,742,946.68	Purpose Specific Grant	B	4,742,946.68
Excess of Income over Expenditure		367,752.75	Grant Committed as on 01.04.2018	581,222.53	
			Less : Grant Receivable as on 01.04.2018	-	
			Add : Grant Received during the year	3,693,936.40	
			Add : Bank Interest	9,626.00	
			Less : Grant Committed as on 31.03.2019	-	
			Add : Grant Receivable as on 31.03.2019	<u>458,161.75</u>	
			Surplus of Other Sources	B-I	367,752.75
TOTAL		5,110,699.43			5,110,699.43

Sanil
Accounts Executive
Mark
Head – Administration
Place: Khori
Date: 20.09.2019

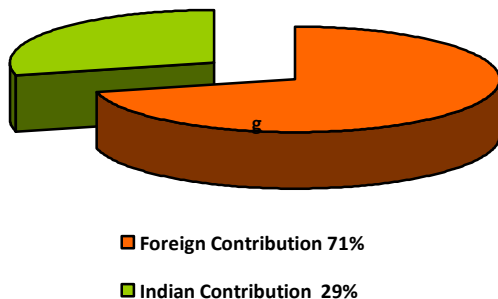


Signed as per our separate audit report of even date attached herewith
M/S PANKAJ MAN SINGH & CO.
Chartered Accountants

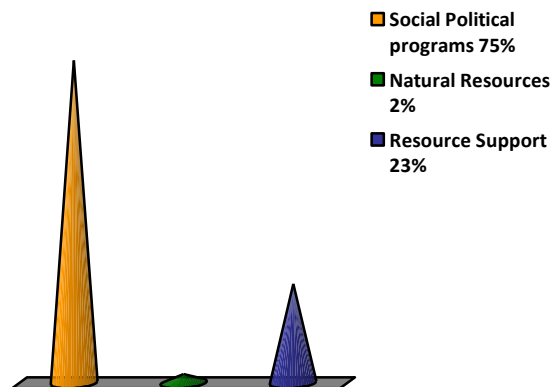
Pankaj Sharma
Pankaj Sharma, FCA, DISA (ICAI)
Partner, Membership No. 096728

[Signature]
Executive Director


Resources Summary



Resources during 2018 - 19



Resource utilization in 2018 - 19

The Organization

Social Centre for Rural Initiative and Advancement [SCRIA] www.scria.org
Email scriakhori@yahoo.co.in

Registration Act

Indian Societies Registration Act of 1860/ Haryana Registration, Regulation of Societies Act 2012

Date of Registration 31. 07. 1992 – 11.04.2017

Registration No. 618 - 00975

Foundation Year June, 1979

Chief Functionary Sunder Lal, Executive Director

Operational Area Haryana & Rajasthan

Headquarter Khori 123101, District Rewari, Haryana

Main office Rajasthan Derajsar 331022, Ratangarh, District Churu, Rajasthan

Funding Sources Govt. of India, State Government, National & International Development Agencies, Local Contributions

SCRIA's Team

Executive Director Sunder Lal

Senior Executive Accounts Sunil Kumar

Head Administration Narender Kumar

Program Team Mohinder, Satbir, Bajrang, Sheela, Jaiparkash, Prem, Suman, Rekha, Ramu Ram, Krishan

Administration Team Uday, Gopal, Phep, Ramkaran, Manoj, Ranbir, Manju, Laxmi, Parmeshwari, Usha, Narender

We gratefully acknowledge the support of more than **6,243 community volunteers**

Partners

★6243 volunteers in 1170 villages ★Asahi India
★Australian High Commission ★ British High Commission
★Canadian High Commission ★Canadian Hunger Foundation
★CAPART ★Canadian International Development Agency
★Department of Science & Technology ★District Rural Development Agency ★CTM - Italy ★Embassy of Federal Republic of Germany ★Embassy of Japan ★Embassy of Sweden ★European Union ★Friedrich Ebert Stiftung ★GTZ
★Habitat for Humanity International ★Helpage ★Indian Council for Agricultural Research ★Indo Global Social Service Society ★Industrial Development Bank of India
★Ministry of Environment & Forest ★ MAHOU Foundation – Spain ★Ministry of Non Conventional Energy Sources
★Ministry of Panchayati Raj ★Ministry of Rural Development
★Misereor ★NABARD ★One Village - U.K. ★Oxfam - U.K.
★Rachna Club – Japan ★Rashtriya Mahila Kosh ★Rotary India Water Conservation Trust ★Royal Norwegian Embassy
★ SIDBI ★Solidar' Monde ★Swedish International Development Agency ★UNDP ★Welthungerhilfe

General Body Members

Ms. Bimla Devi, President – Village & P.O. Bas Duda, District Rewari , Haryana

Ms. Lalita Devi, Vice President –Village Gagadwas, P.O. Bawania, District Mahendergarh, Haryana

Mr. Ram Chander Punia, Treasurer – 12 MC Colony, Dadri, District Dadri, Haryana

Prof. Ranbir Singh, Secretary – H. No.120, Sector 3, Rewari 123401, Haryana

Ms. Kusum Lata, Associate Secretary – Village Kalaka, P.O. Gurdas Majara, District Rewari, Haryana

Dr. Jyotsna Chatterji, Member – Apartment 201, Block 44, Heritage City Complex, M.G. Road, Gurgaon - 122002, Haryana

Mr. Narendra Singh Rao, Member – D 26, Suncity Sector 7, Rewari 123401, Haryana

Mr. Avadhesh Kumar, Member – A16 Pundrik Vihar, Pitampura, New Delhi 110034

Mr. Romesh Bhattacharji, Member – D 1008, New Friends Colony, New Delhi 110065

Dr. Laj Pal Bharara, Member – 17/399 Chopasani Housing Board, Jodhpur, 342008, Rajasthan

Mr. Jagjit Singh, Member – Krishna Nagar, Col. Maha Singh Chowk, Rewari, Haryana

Governing Body Members

Ms. Bimla Devi, President – Village & P.O. Bas Duda, District Rewari , Haryana

Ms. Lalita Devi, Vice President –Village Gagadwas, P.O. Bawania, District Mahendergarh, Haryana

Mr. Ram Chander Punia, Treasurer – 12 MC Colony, Dadri, District Dadri, Haryana

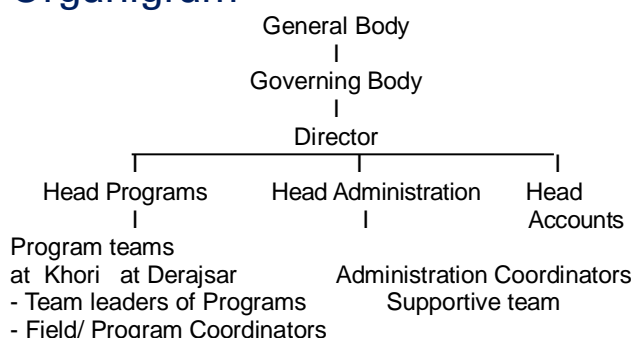
Prof. Ranbir Singh, Secretary – H. No.120, Sector 3, Rewari 123401, Haryana

Ms. Kusum Lata, Associate Secretary – Village Kalaka, PO. Gurdas Majara, District Rewari, Haryana

Dr. Jyotsna Chatterji, Member – Apartment 201, Block 44, Heritage City Complex, M.G. Road, Gurgaon - 122002, Haryana

Mr. Jagjit Singh, Member – Krishna Nagar, Col. Maha Singh Chowk, Rewari, Haryana

Organigram



SCRIA Actively Concentrates on

- mainstreaming gender equality & promoting gender perspective
- sensitizing on women's rights, entitlements & gender justice
- promoting a culture intolerant of gender violence
- organizing women for a meaningful partnership in development through political empowerment and participation in governance processes
- social empowerment of women & Gram Sabha members for social justice & local initiatives
- demystification & dissemination of information related to various issues, laws, legal processes & procedures and public schemes
- promotion of livelihood activities among low & marginal income families
- engaging teens & youth on social challenges
- rain harvesting, prudent water usage and ground water recharging
- soil conservation, vegetation promotion
- sustainable & organic dry land agricultural practices and livestock management
- environmental sanitation at household and community level



SOCIAL CENTRE FOR RURAL INITIATIVE & ADVANCEMENT

Head Quarter - Khori 123101, District Rewari, Haryana, India

Main Office Rajasthan – Derajsar 331022, Ratangarh, District Churu, Rajasthan, India

<http://www.scria.org> Email – scriakhori@yahoo.co.in